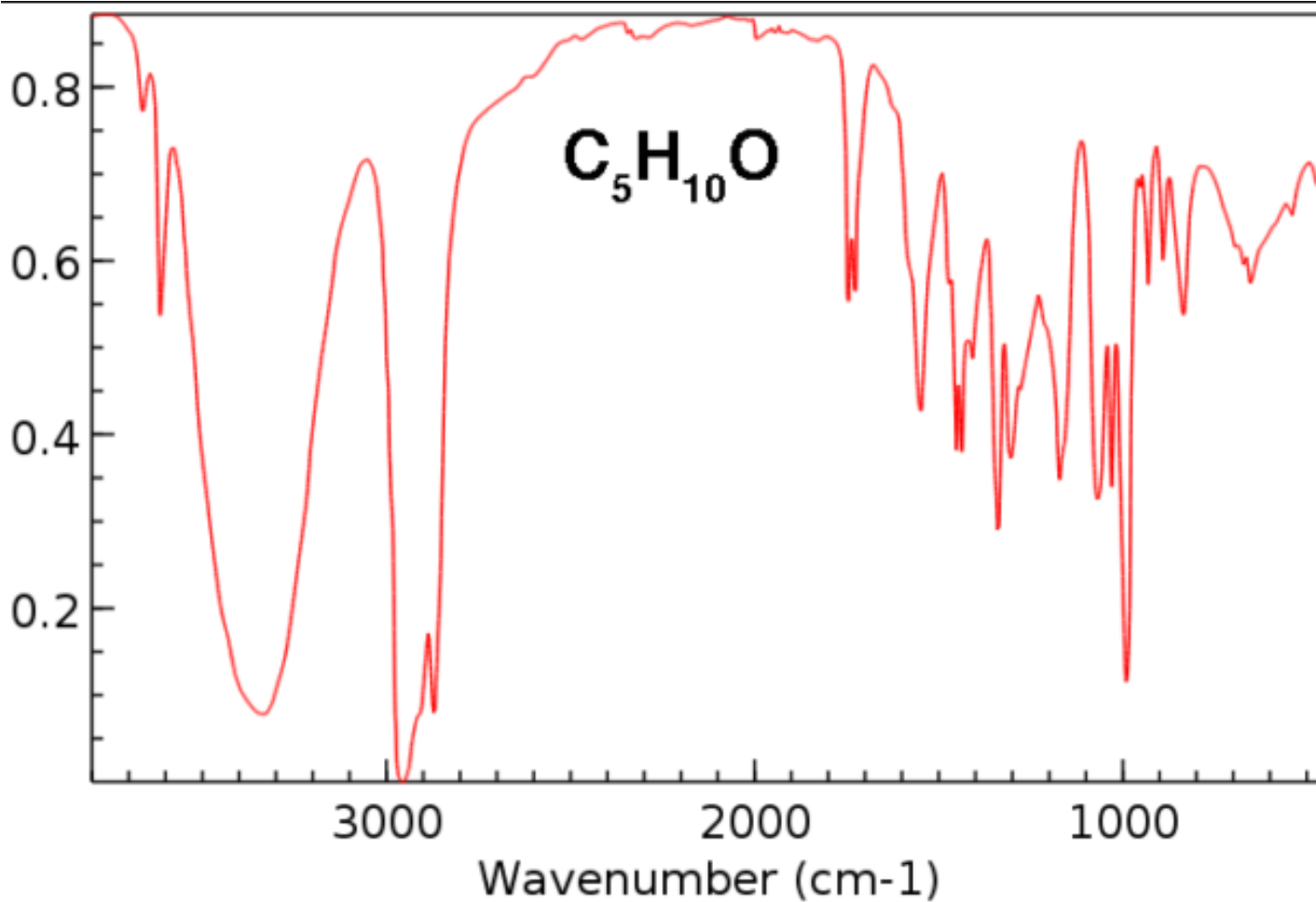
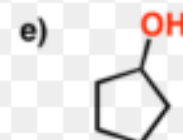
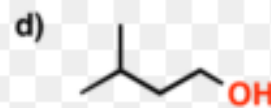
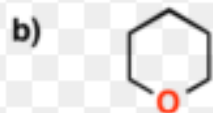
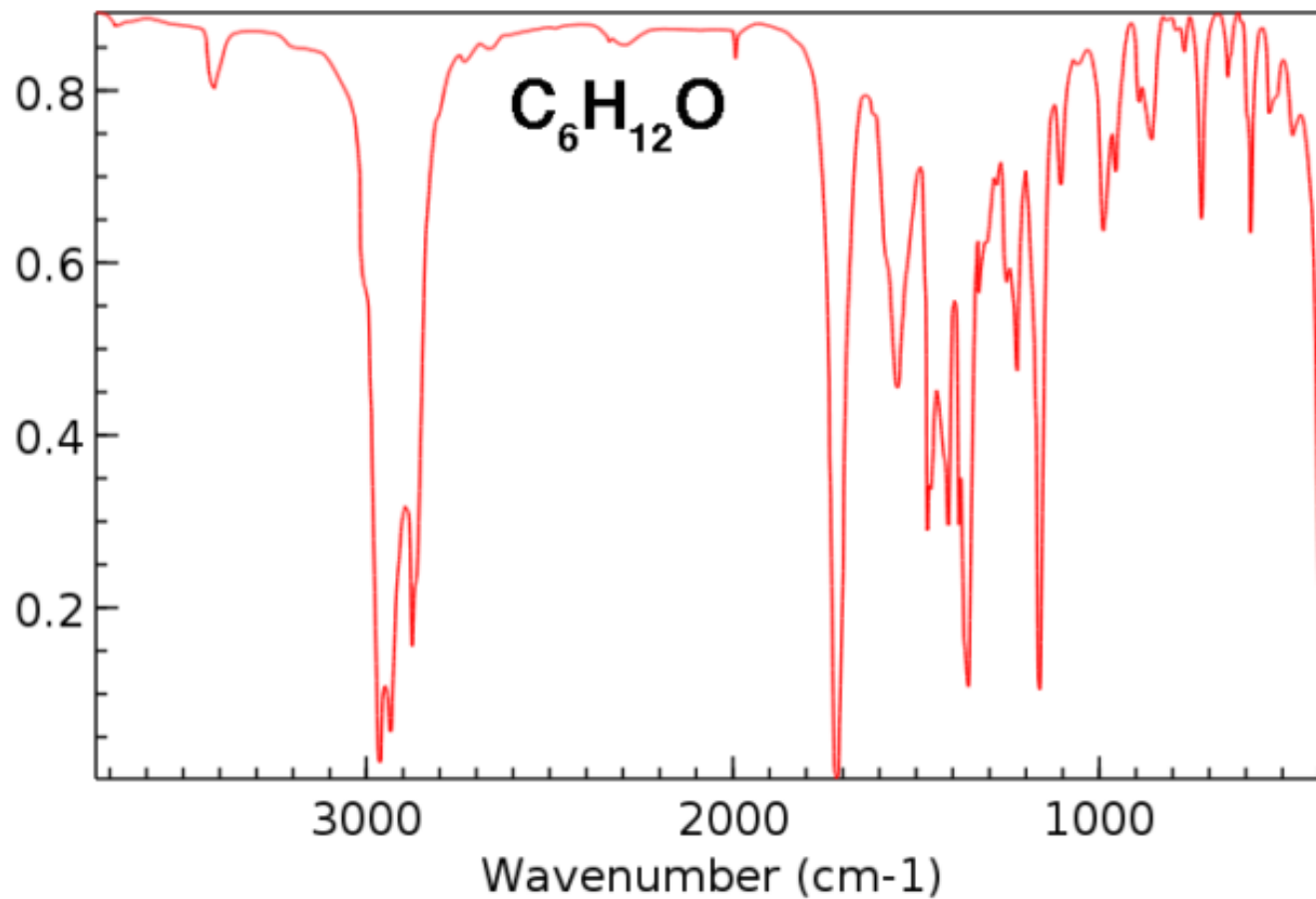
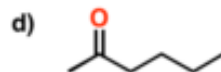
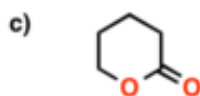
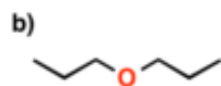
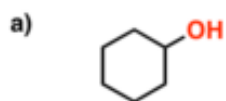


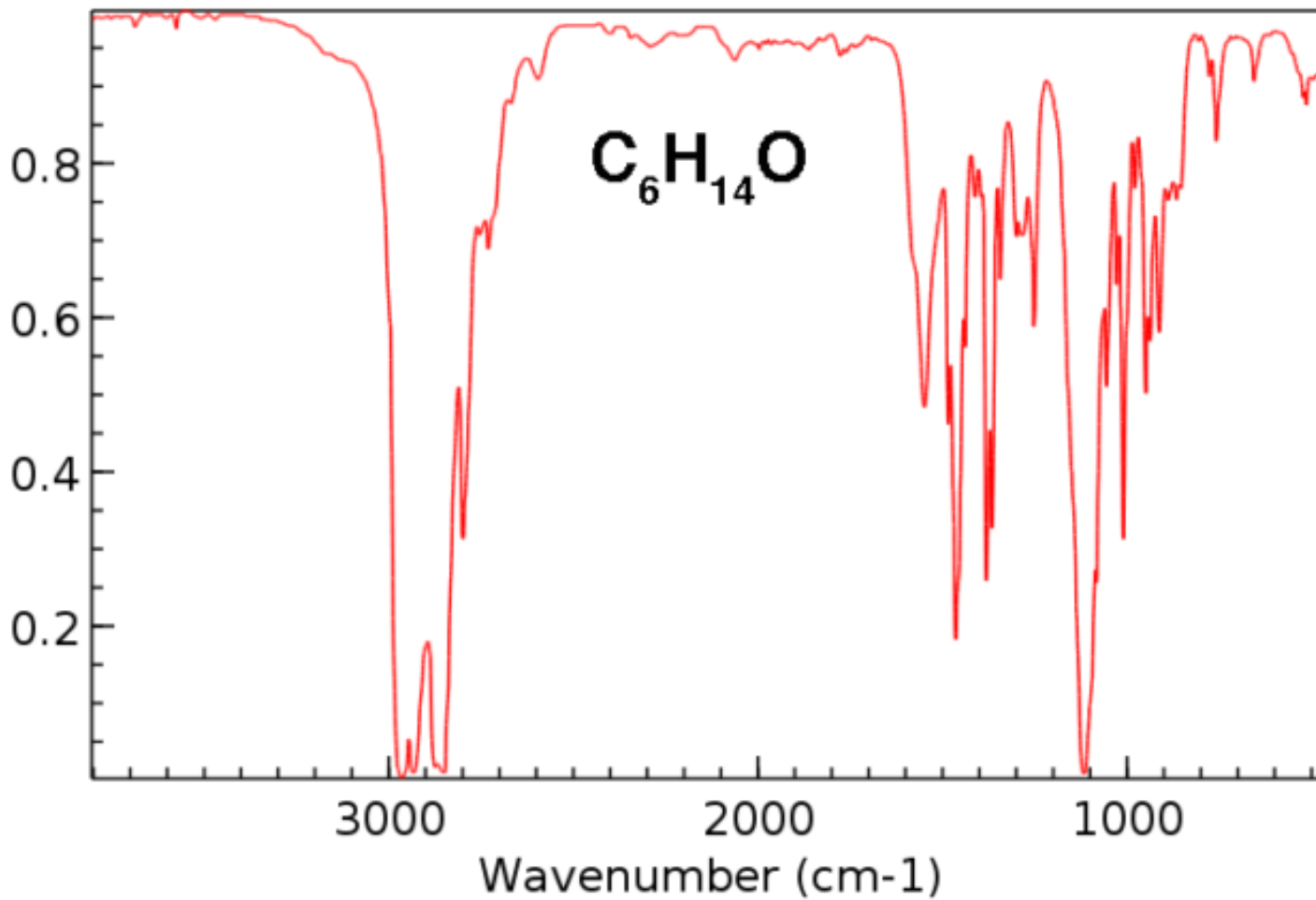
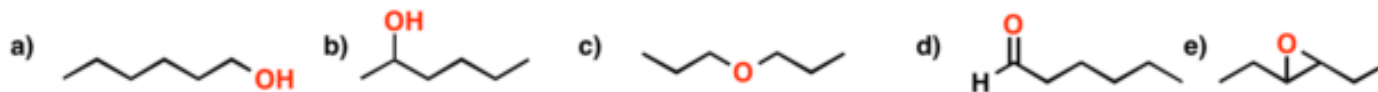
Which of these molecules best corresponds to the IR spectrum below?



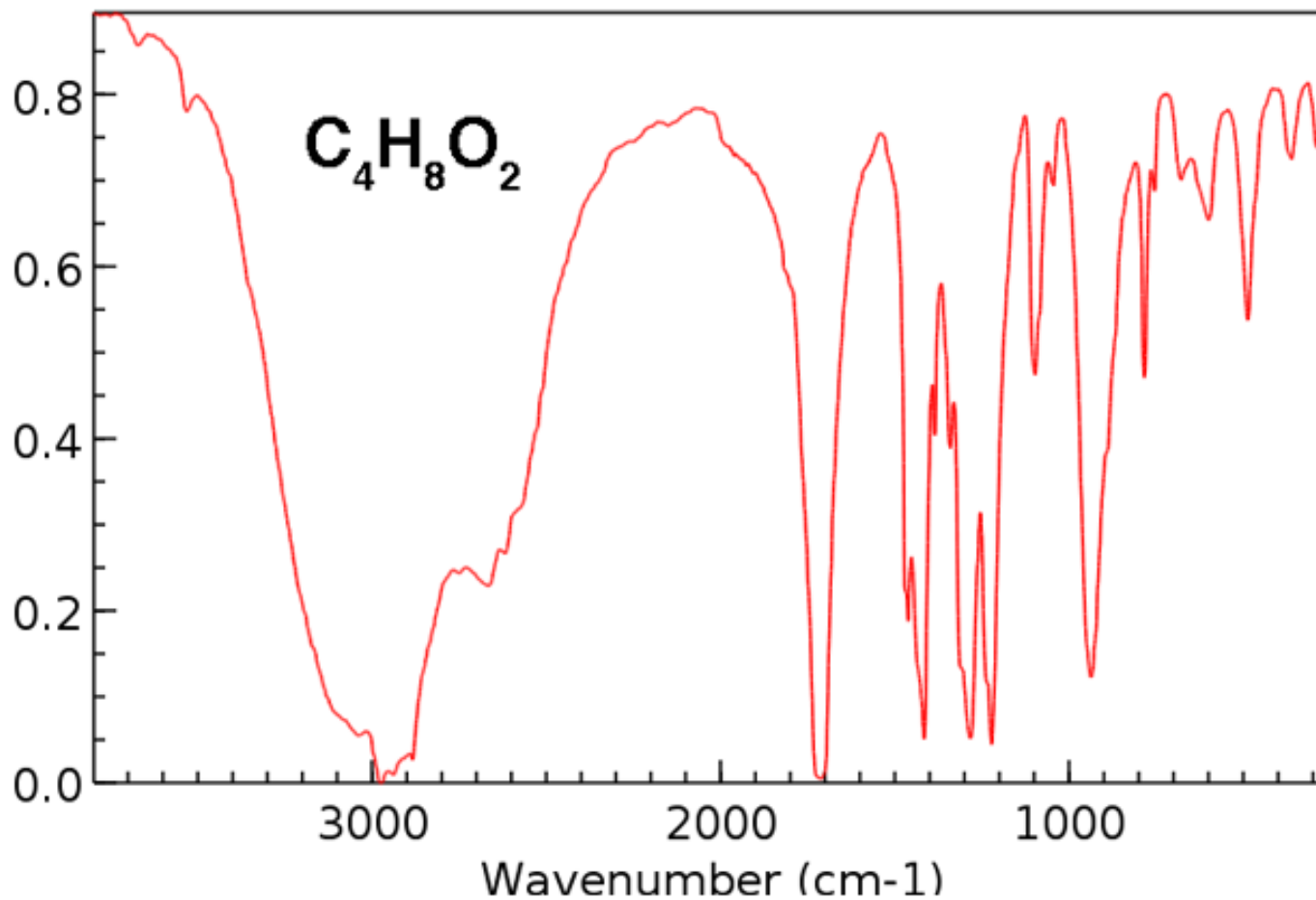
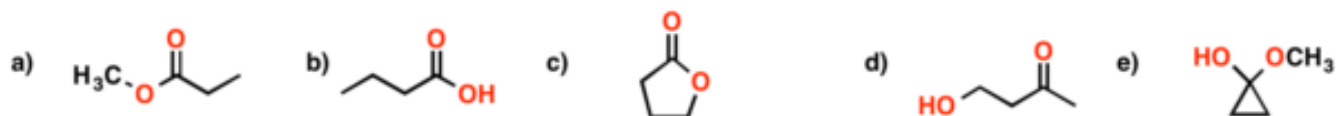
Which of these molecules best corresponds to the IR spectrum below?



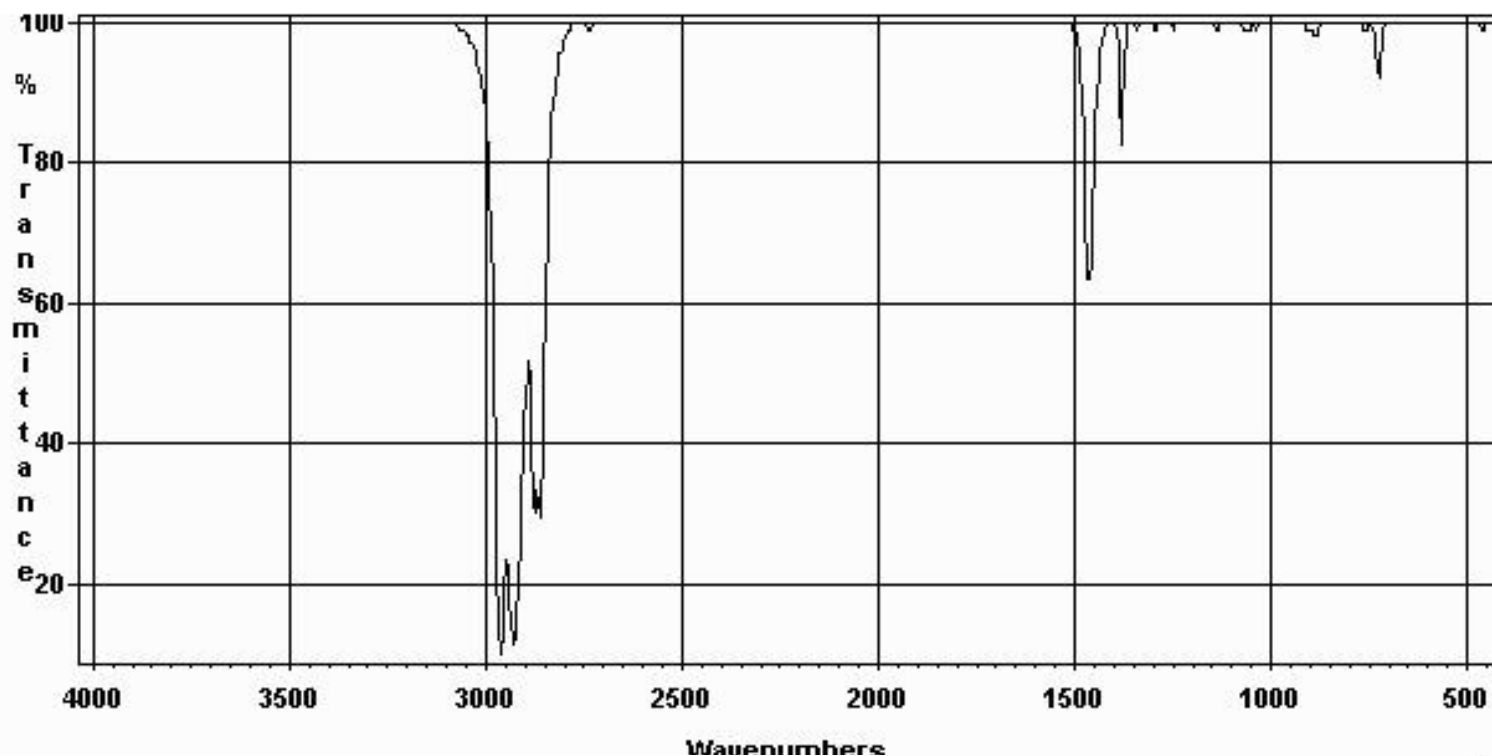
Which of these molecules best corresponds to the IR spectrum below with molecular formula $C_6H_{14}O$?



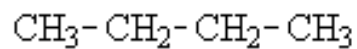
Which of these molecules best corresponds to the IR spectrum below?



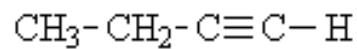
What is the structure of the compound that gives the following infrared spectrum?



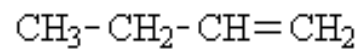
(a)



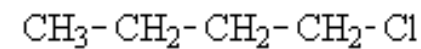
(b)



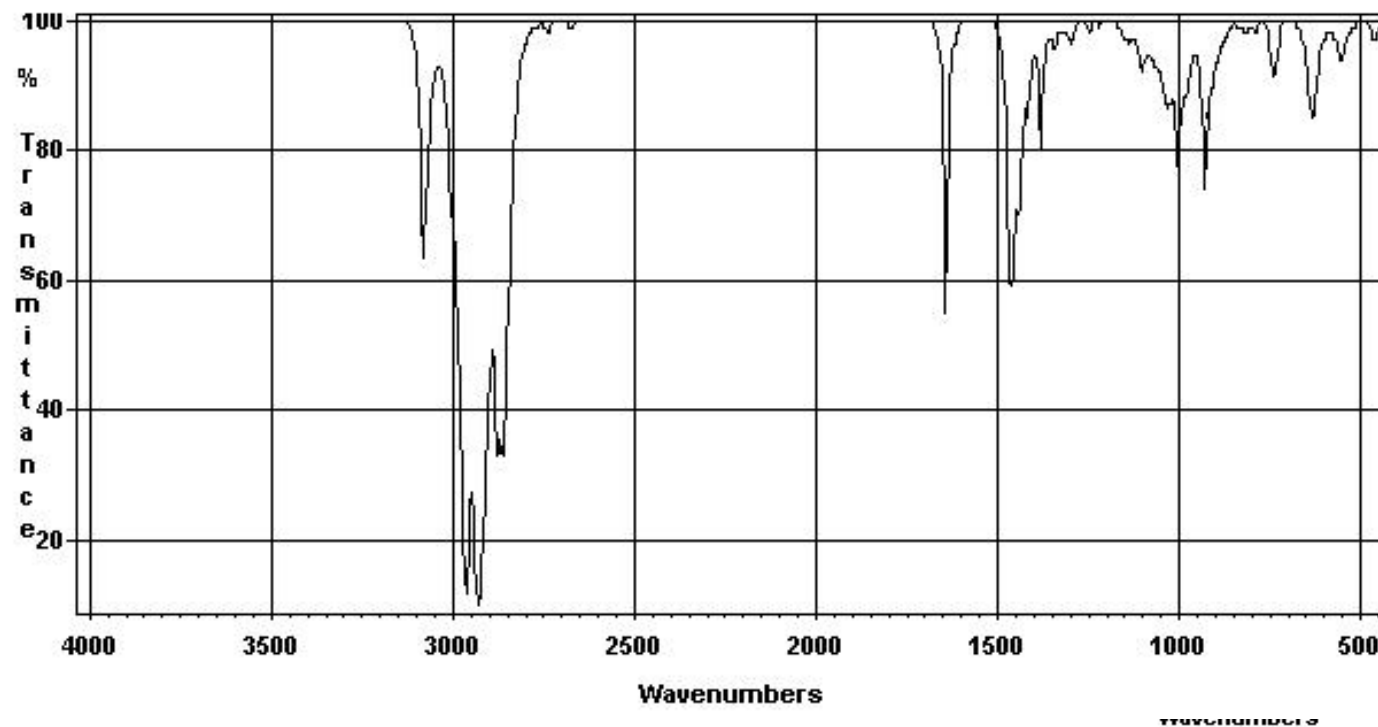
(c)



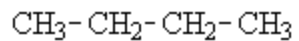
(d)



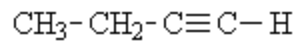
What is the structure of the compound that gives the following infrared spectrum?



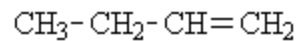
(a)



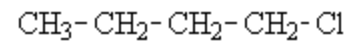
(b)



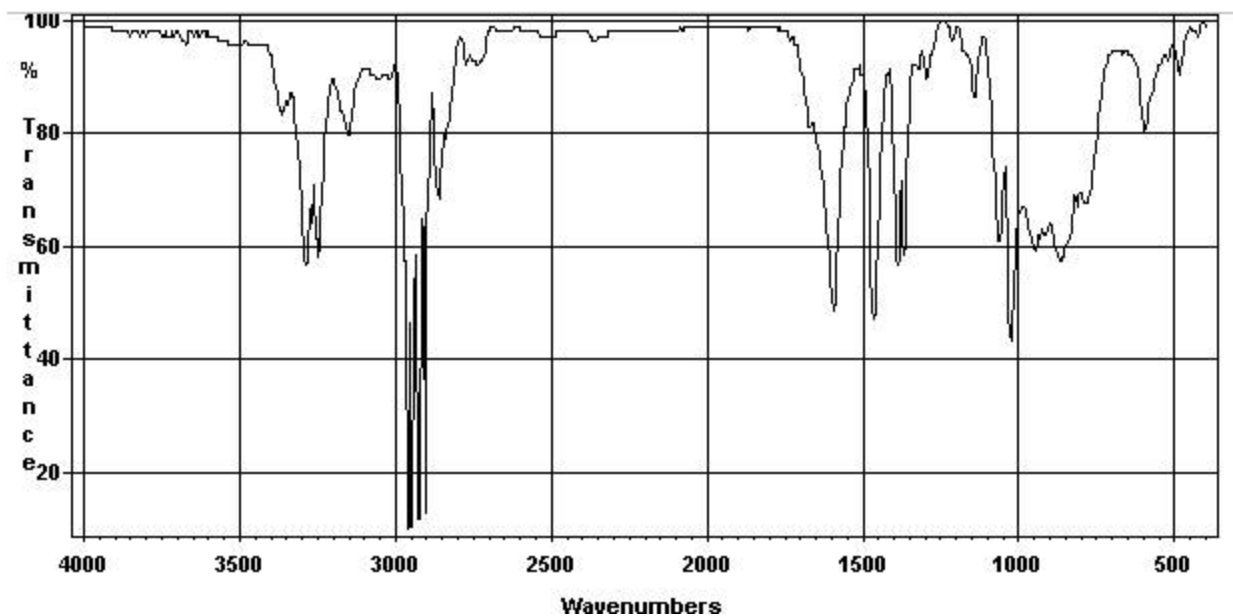
(c)



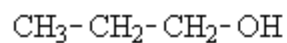
(d)



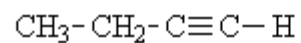
What is the structure of the compound that gives the following infrared spectrum?



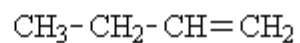
(a)



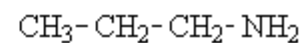
(b)

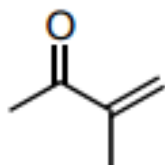


(c)

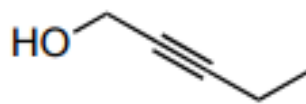


(d)

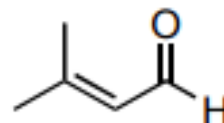




A

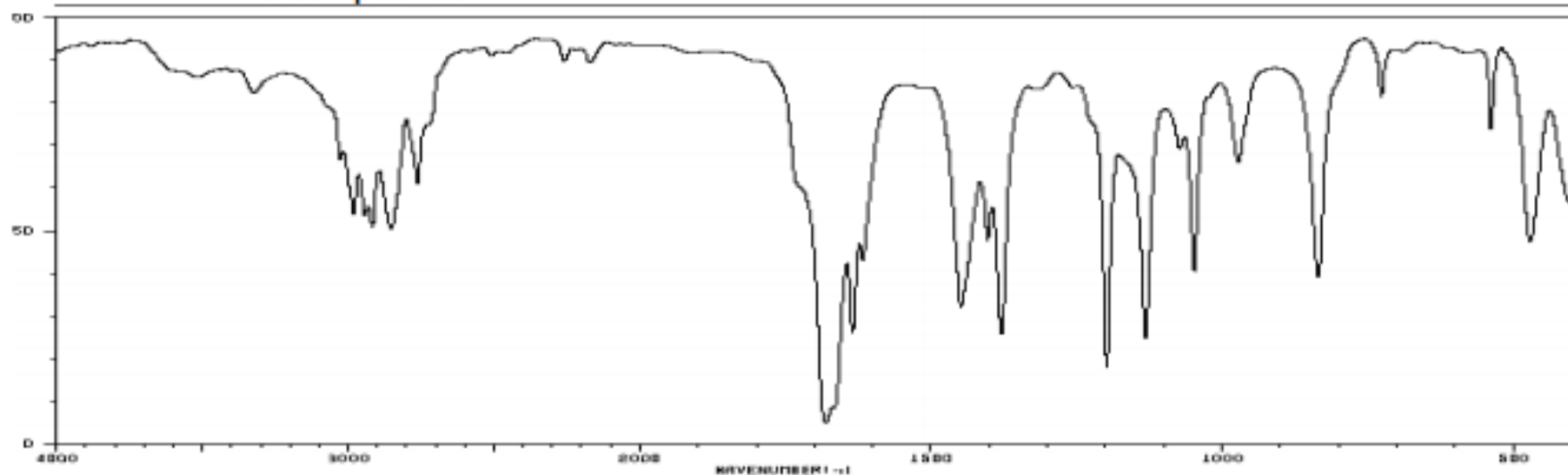


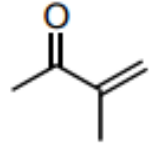
B



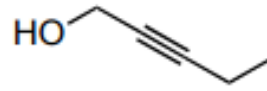
C

The compounds:

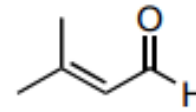




A

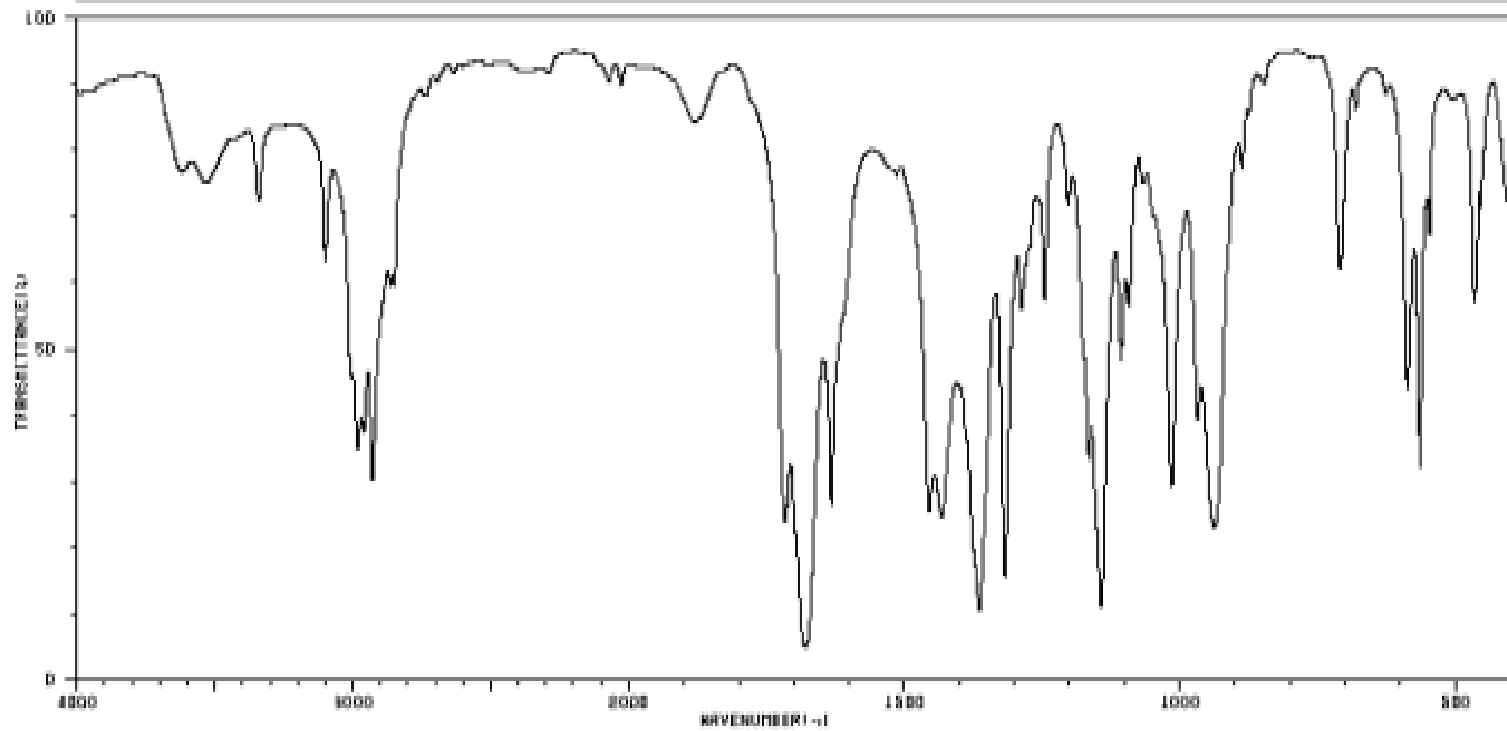


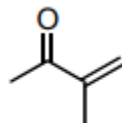
B



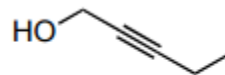
C

The compounds:

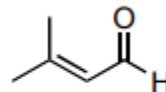




A



B



C

The compounds:

